

The background of the entire page is a dark blue gradient filled with numerous thin, bright blue lines of varying lengths and orientations, creating a sense of dynamic movement and digital connectivity.

**One World**  
— A GLOBAL MOVING COMPANY —

# Data Center **Migrations Services**

# SUMMARY

## Value-Added Services

- Servers & Firewall Configurations.
- Back up & Disaster recovery
- ITAD (IT Assets Disposal)
- Hardware Replacement
- Servers Shutdown & Configurations



BACKBLAZE

EMC<sup>2</sup>



FUSION-io



FalconStor  
Software



## Discovery

Identifying the need of client  
Survey of Data Center at Origin  
& Destination  
Discovering the challenges during  
Migrations.

## Planning

TimeLine for Migrations  
Logistic & Technical Management  
Budget for Migrations

## Development

Minimize Business Impact  
Rebooting Servers & Network  
Begin on-Premise Infrastructure

## Validation

Pre Structure Cabling at new DC  
Site  
Testing & Configuring  
Documentation Management  
(Cables & Network)

## Migrations

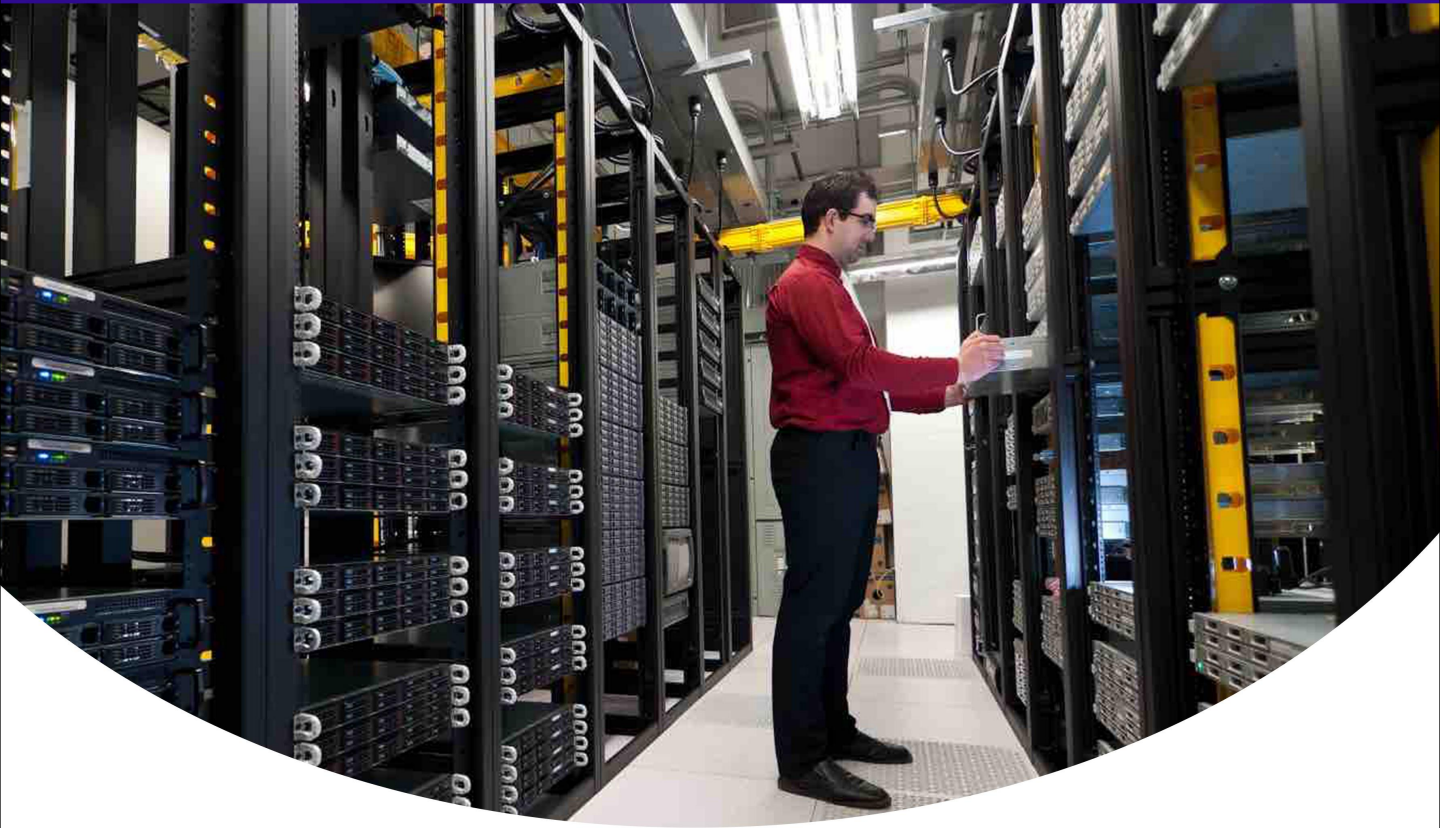
Technical & Logistic Management

## Management

Documentation Management  
Risk Management

## Scalability

Testing of Final Migrations Ends



# SURVEY BEFORE MIGRATIONS

- What exactly are we migrating
- Our budget and timeline to migrate them
- Our success outcomes be post-migration
- Perform a configuration management database assessment
- Map out your IT asset network ecosystem
- Begin timing DC migration according to the network ecosystem

Requirement of Structure Cabling & Tools



# TECHINICAL SUPPORT DURING MIGRATIONS:

- End-to-End Solutions from consultation to implementation
- Perform various front-end validation tests
- Documentation – customer profile, project require document, CAD floor diagrams and elevations, installation test results
- Experts in Layer 1 Infrastructure design for small to large enterprise data centers
- Labelling & Tagging of Servers with networks before Migrations
- Pre Structure Cabling at Destinations Data Centre
- Documentation of Labelling & Cabling



# TECHNICAL SUPPORT DURING MIGRATIONS:

- Unmounting of Servers, chassis & network device form Rack
- Procurement of Network Equipment (OEM)
- Rack Alignment Management
- Risk Management
- Design approach maximizes the performance of connectivity for next generation speeds and technologies
- Installation of Layer 1 infrastructure including overhead
- Conveyance, central patching location, patch panels and zone solutions

# STAGE OF HANDLING



## **TECHNICAL SUPPORT & SERVICES**

- Engineers Team Management
- Documentation Management
- Client & Vendor Engagement during Network Layout
- Final Lay out of Structure Cabling
- Unplugging & Tagging of Fiber & network Cables
- Mounting & Unmounting of Servers & Network Rack

## **RELOCATION ENVIRONMENT**

- Packing Team & Labor Management
- Fork Lifts and Truck Alinement Before Migrations
- Elevators, Hallways, Windows, Rooftops
- Inventory Management
- Risk Management
- Way Out Route Management
- Packing Material alinement
- Security Check



# TRANSPORTATION:

- One World vehicles are of air cooling system inside which will help to maintain the temperature and prevent moisture during the time of migration
- Base of vehicle Contain 50mm form sheet to provide cushioning
- The Maximum speed of the vehicle is 30km/hr.
- A minimum of 3 straps tie the Rack to the container sidewalls
- Additional use of cargo bars to segregate freight
- Use of Forklift while loading the heavy Loaded Rack
- Special Wooden Packing for Servers higher the 8U Size
- Forklifts & High Boom Hydraulic Cranes for Loaded Racks
- Inventory Management
- Risk Management (Transit Insurance)

# CLIENT'S & PROJECT REPORTS:

UTI ASSETS MANAGEMENT LTD  
12 RACK MIGRATIONS  
WITH IN HYDERABAD & MUMBAI  
DOWNTIME : 51HRS

MAJESCO INDIA  
20 RACK MIGRATIONS  
WITH IN MUMBAI  
DOWNTIME : 23HRS

CRTLS DATACENTER LTD  
51 RACK MIGRATIONS  
GURGAON TO NOIDA  
DOWNTIME : 6PHASE/43HRS

DNATA PVT.LTD  
8 RACK MIGRATIONS  
NOIDA TO GURGAON  
DOWNTIME : 14HRS

# CASE STUDY

## MAJESCO LTD



### Purpose:

The purpose of this DC Migrations was to collocate in CtrlS as client wants to empty there office space.

### Technical Migrations

Procurement of CAT 6 & 6A Patch cord, Fiber Optic Cable.  
Replacement of DIMM & CPU.  
Labeling, Cabling.  
Mounting of Devices.  
Inter rack Connectivity.  
Server Ping Testing.  
Rack Dressing.  
Structure Cabling at Data Center.  
Console access to Client.

### Non- Technical Migrations

Packing of servers, Chassis, Server Racks.  
Loading & Unloading, Unpacking,  
Transportation

Scope

# CASE STUDY ( MAJESCO LTD )

## Best Practice:

Two Different team available during Migrations at Origin & Destination, Insurance has been taken in advance a day before migrations, One World Network Head & Migrations Head was Aline with Majesco & CtrlS working parallelly, Back up Transport Team if any logistic failure.

## Challenges During Migrations:

Majesco team has phase hardware failure while rebooting which delayed 2 Hrs in our downtime.

- Rack Alinement was issue at CtrlS Data Center for chassis. (One world Team has over come with solutions)
- Failure of Server Rail Kit.

## Recommended Solutions ( by One World ):

- Reboot Servers Before Migrations.
- Revisits Destination DC Before Activity.
- Check List ( Servers, Packing team, Security, Timeline, Destination Security, Logistic team, Final Check of Power supply, Final Check of Network, Connective & Internet connective)

## Down Time :

- Migrations (10Hrs)
- Cabling & Networking (13 Hrs)
- Total Servers (160) , Chassis 4, Switch & routers 18
- Distance Cover during Logistic : 2.4 KM (time 45MIN)  
speed of Vehicle (25-30KM/Hrs)

CASE STUDY MAJESCO LTD

RESULT RESULT



One world Met the Client Requirement & Downtime.  
Activity Successfully Completed.





# Feedback





One World  
— A GLOBAL MOVING COMPANY —

**WE  
ARE  
AVAILABLE** *Global*



# ***CONTACT US***

## **MUMBAI OFFICE (H.O)**

Inspire, Mayuresh Square, Plot: 17, Sector 15,  
CBD Belapur, Navi Mumbai, Maharashtra 400614.

Board Line : +91 882 882 0 887  
Email: [info@oneworldlogix.com](mailto:info@oneworldlogix.com)

## **Services Available:**

Bangalore | Hyderabad | Delhi | Chennai | Kolkata | Pune |  
Ahmedabad | Mumbai ||USA | Canada | Mexico | UK |Turkey |  
Colombia | Portugal | UAE | Malaysia | Korea | Singapore |

**One World**  
— A GLOBAL MOVING COMPANY —

**Thank  
You...!!!**